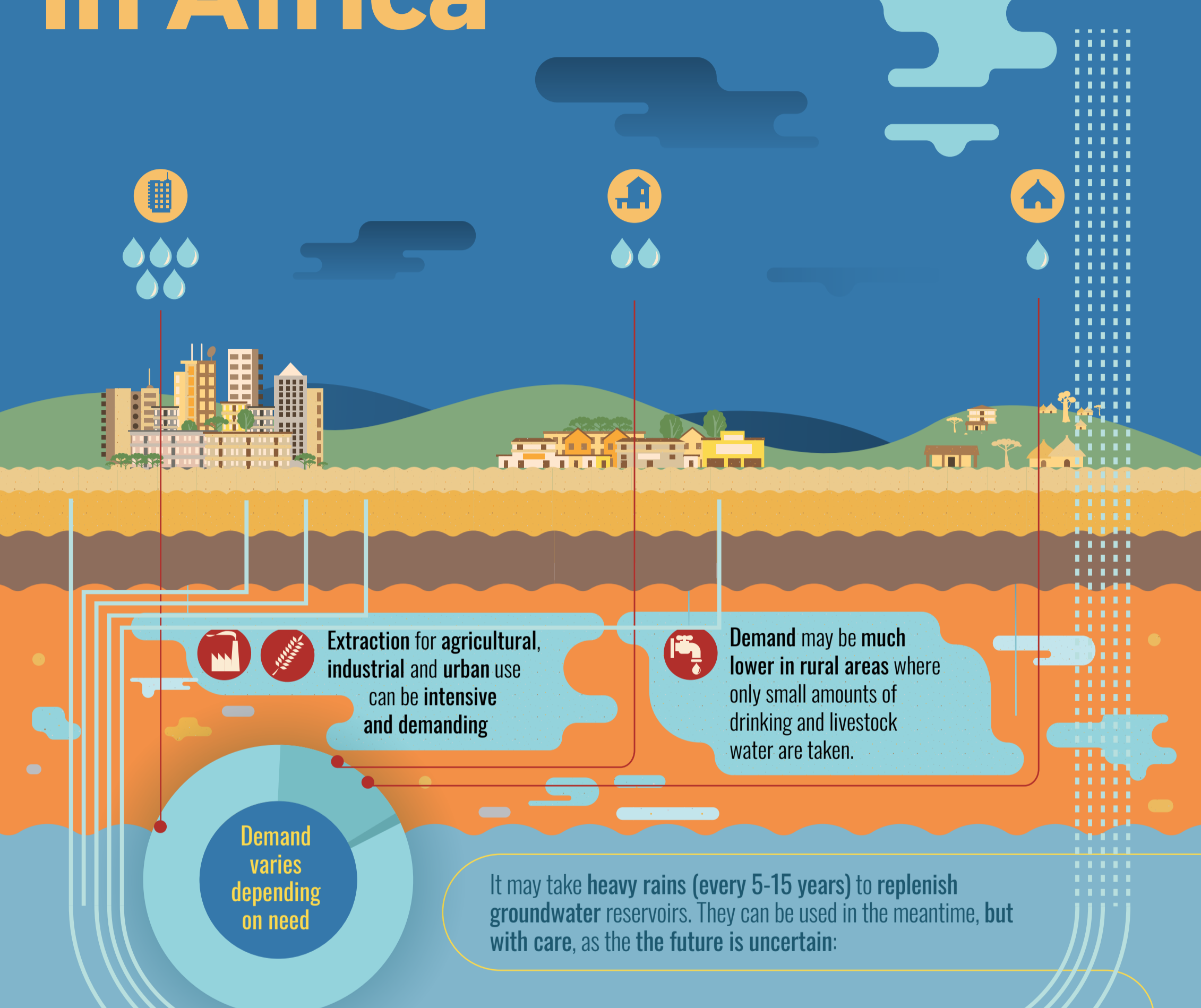


Groundwater in Africa

Availability of groundwater and rates of extraction vary widely from place to place



Demand varies depending on need

Extraction for agricultural, industrial and urban use can be intensive and demanding

Demand may be much lower in rural areas where only small amounts of drinking and livestock water are taken.

It may take heavy rains (every 5-15 years) to replenish groundwater reservoirs. They can be used in the meantime, but with care, as the the future is uncertain:



Demand for water is likely to rise, especially for agricultural, industrial and urban use



The **environment** is becoming increasingly urbanised and degraded



Climate change is real but its effects are not always predictable



Replenishment may increase, decrease or stay the same, and will vary from place to place



Monitoring of groundwater use, quality and levels will become increasingly important